

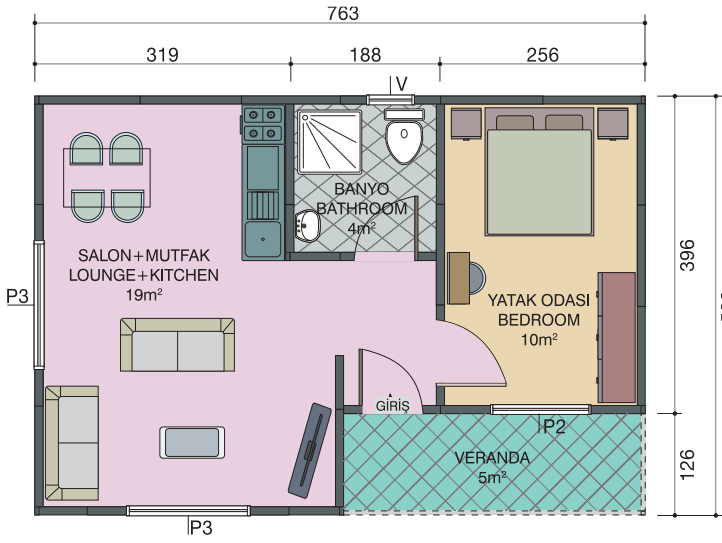


• **KONUT**

• **OFİS**

• **ŞANTIYE**

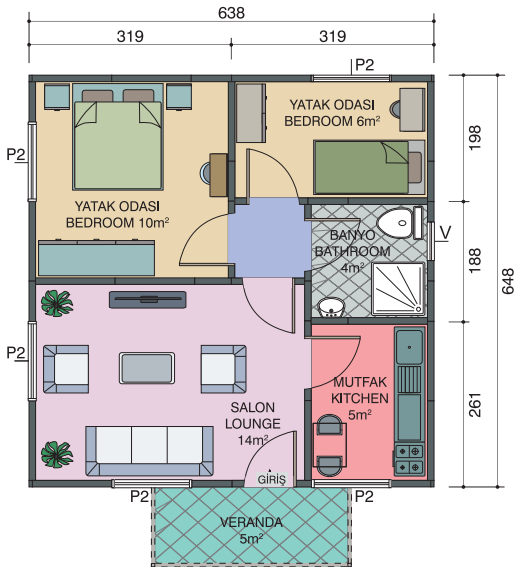
• **KONTEYNER**



ESP 511



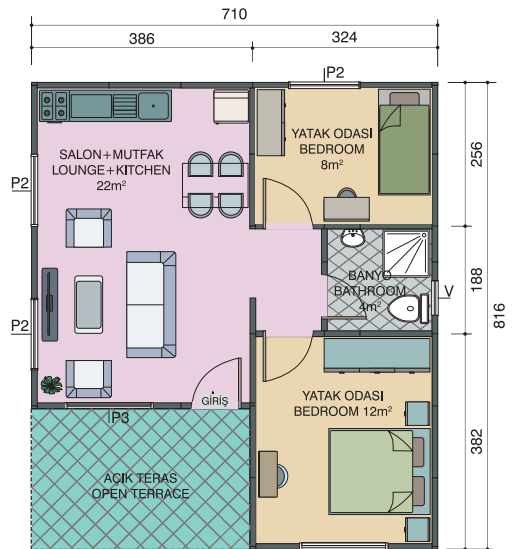
40 m²



ESP 512



45 m²

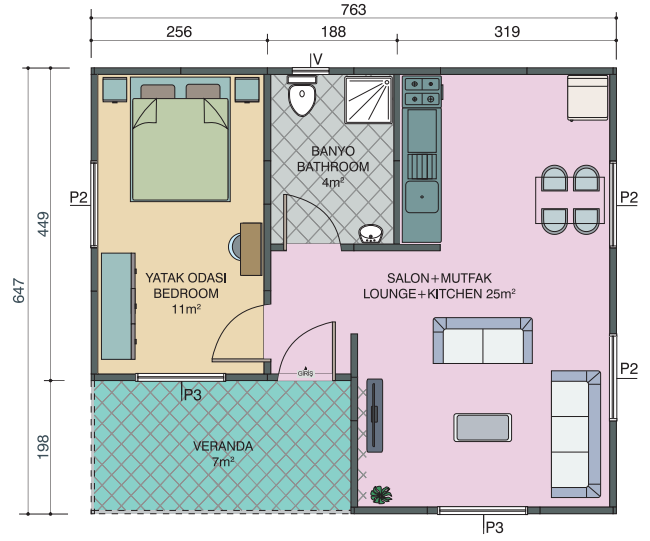


ESP 513

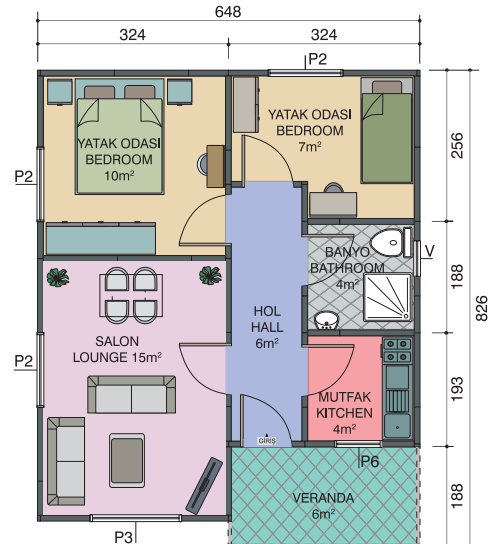


49 m²

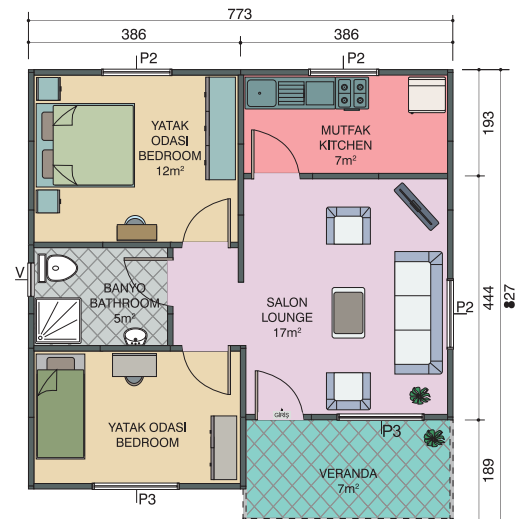
ESP 514



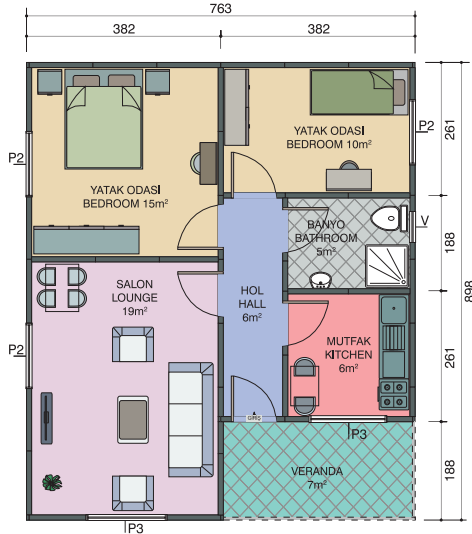
ESP 515



ESP 516

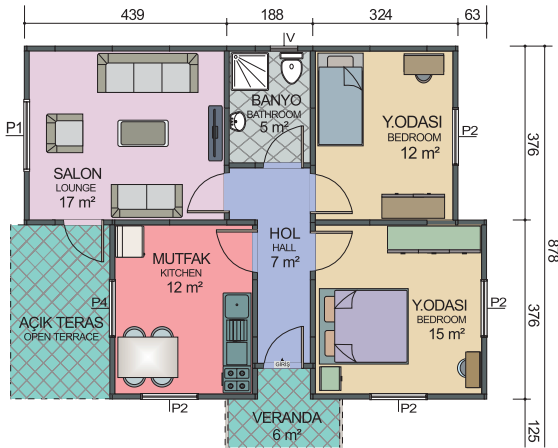


ESP 517



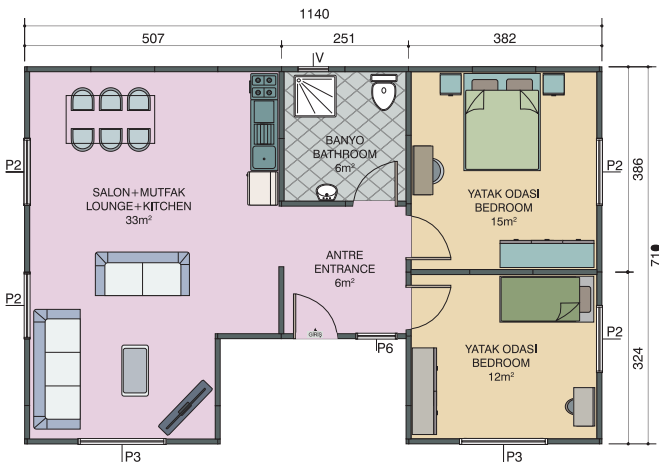
68 m²

ESP 538



72 m²

ESP 518



73 m²

ESP 520



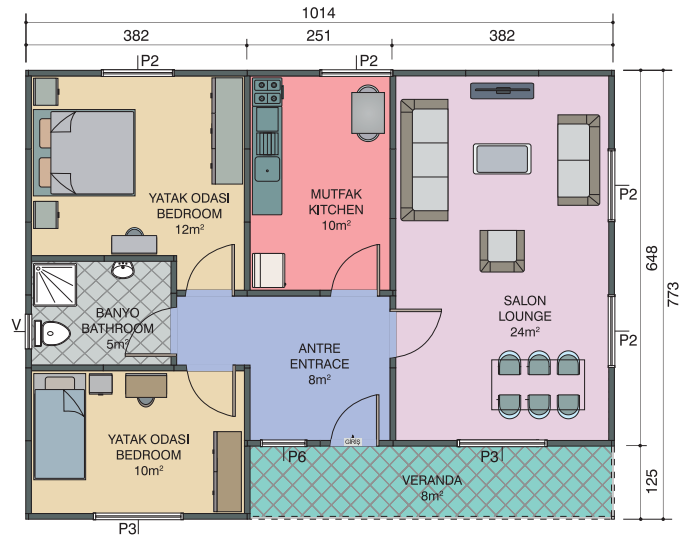
77 m²



ESP 521



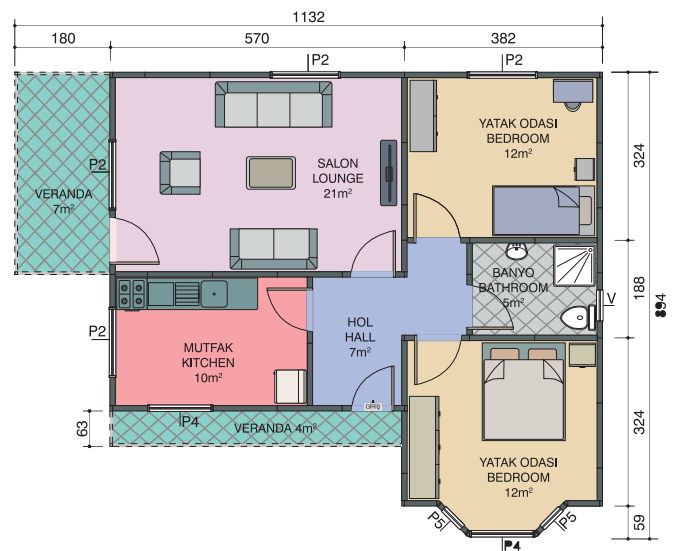
78 m²



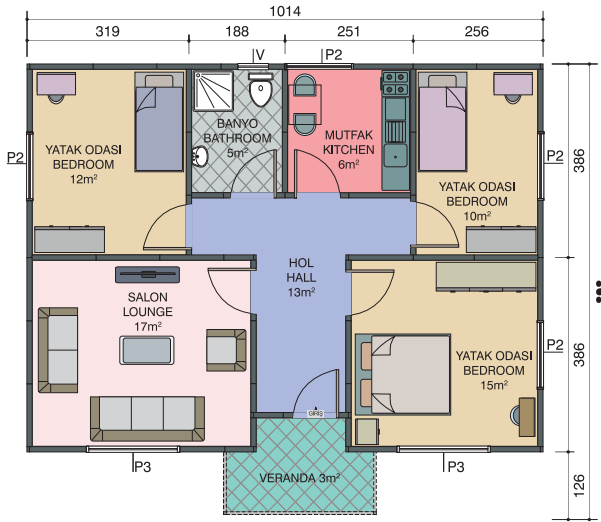
ESP 522



80 m²

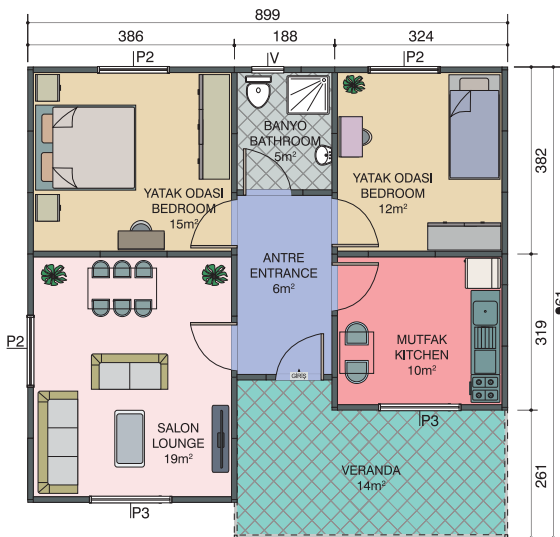


ESP 523



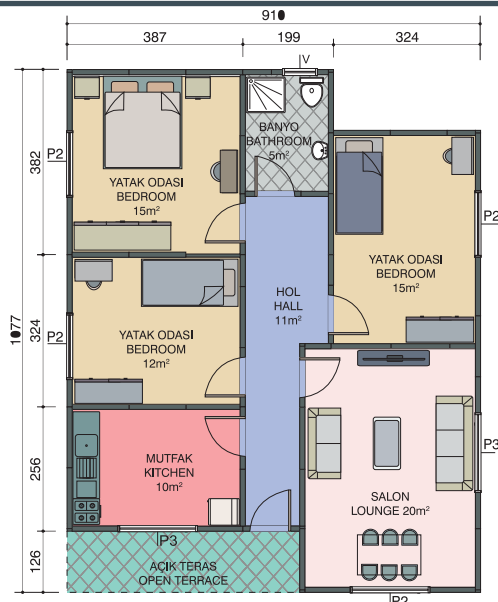
81 m²

ESP 524



82 m²

ESP 525

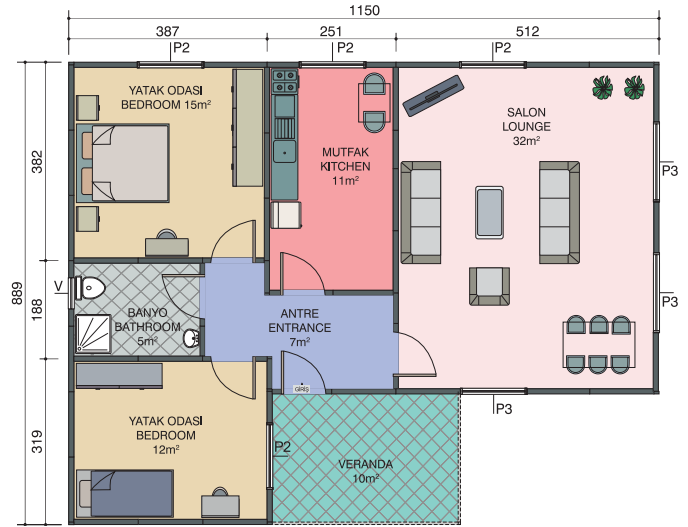


90 m²

ESP 526



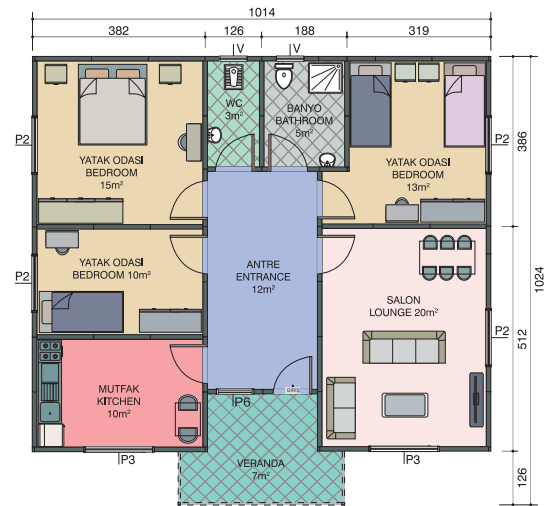
91 m²



ESP 527



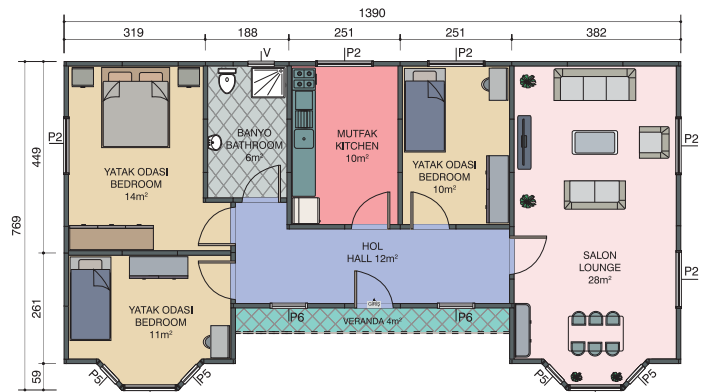
95 m²



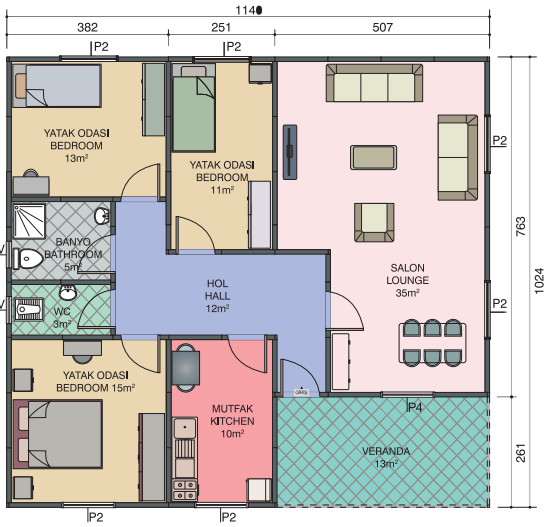
ESP 528



98 m²

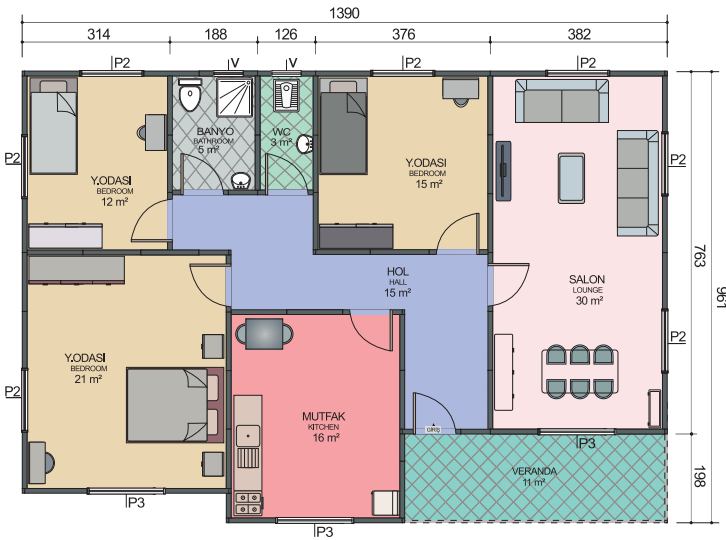


ESP 531



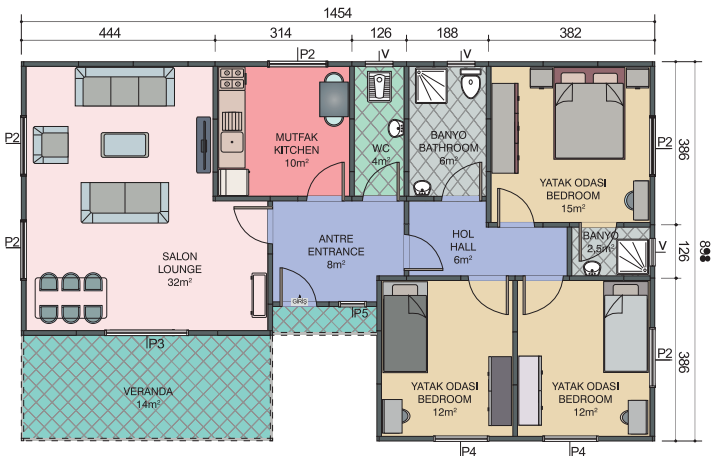
117 m²

ESP 532



119 m²

ESP 533

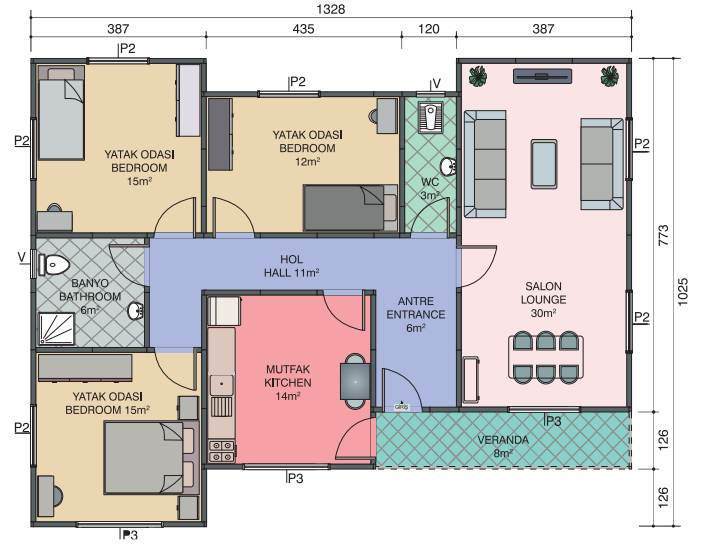


123 m²

ESP 534



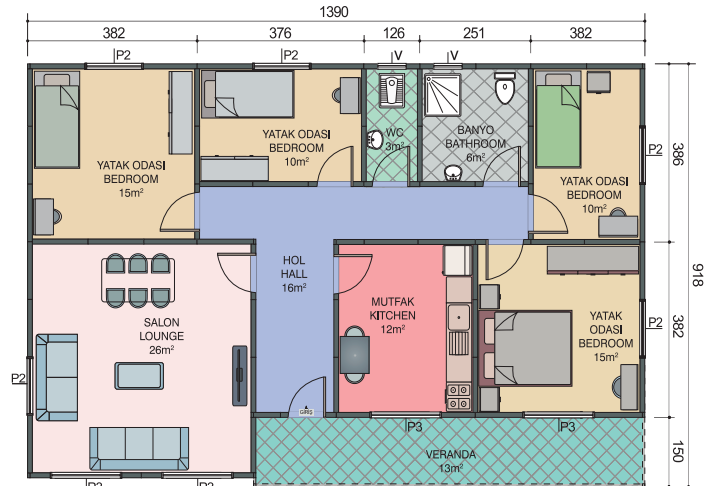
121 m²



ESP 535



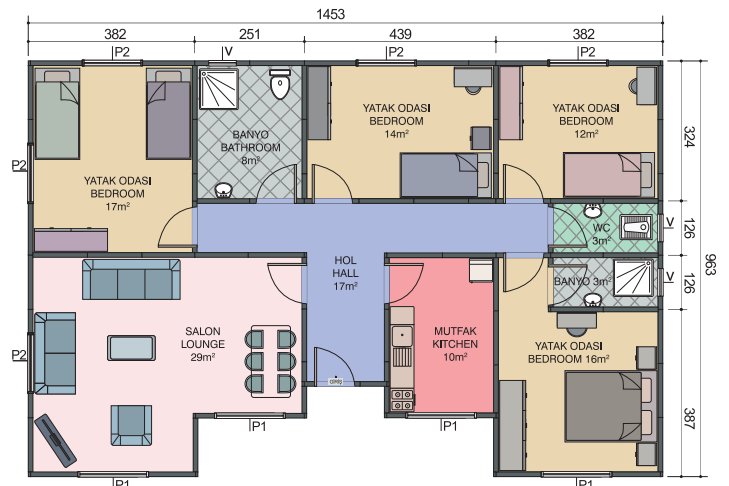
126 m²



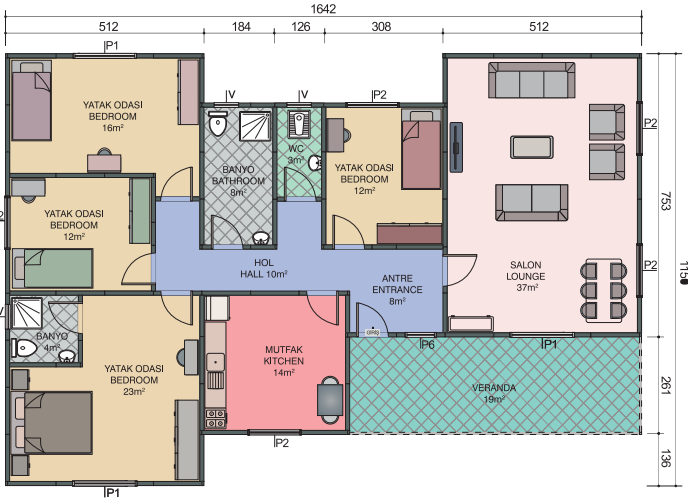
ESP 536



129 m²

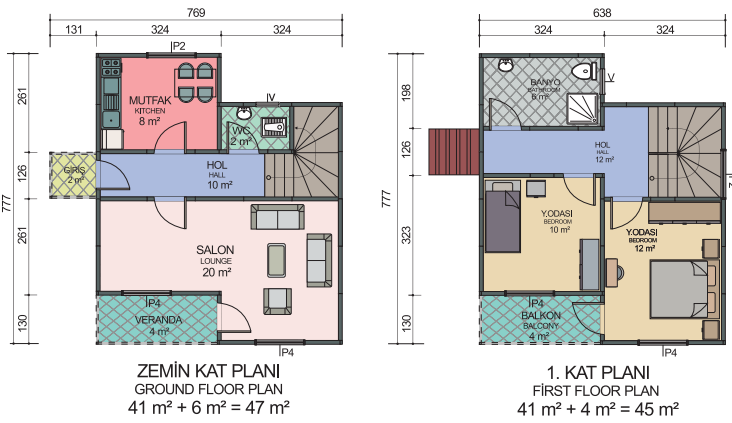


ESP 537



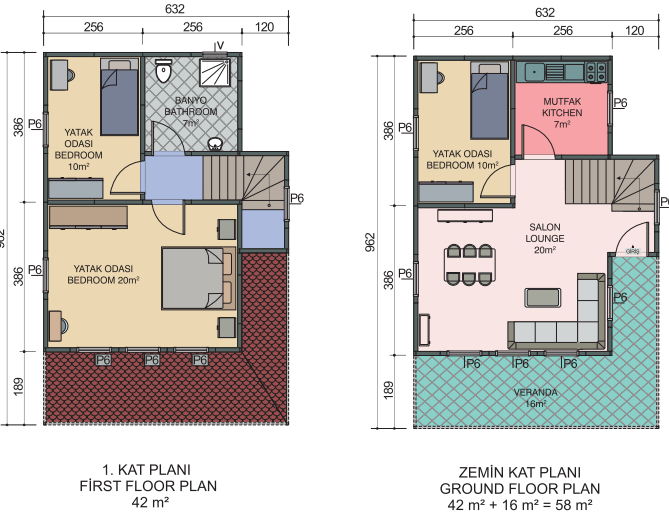
166 m²

ESP 712



92 m²

ESP 713

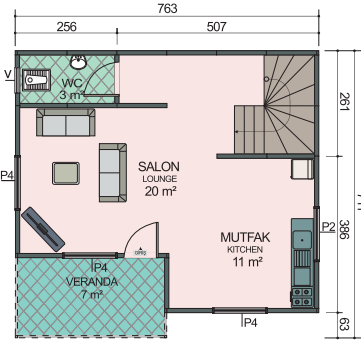


100 m²

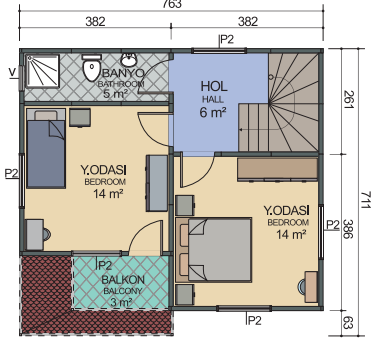
ESP 714



100 m²



ZEMİN KAT PLANI
GROUND FLOOR PLAN
45 m² + 7 m² = 52 m²

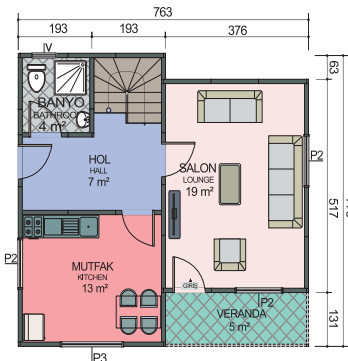


1. KAT PLANI
FIRST FLOOR PLAN
45 m² + 3 m² = 48 m²

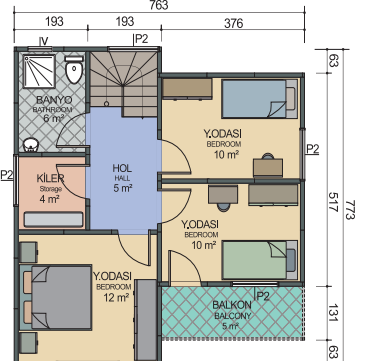
ESP 715



105 m²



ZEMİN KAT PLANI
GROUND FLOOR PLAN
46 m² + 5 m² = 51 m²

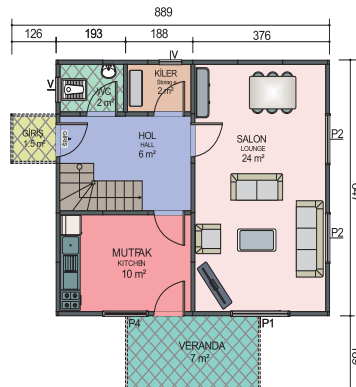


1. KAT PLANI
FIRST FLOOR PLAN
49 m² + 5 m² = 54 m²

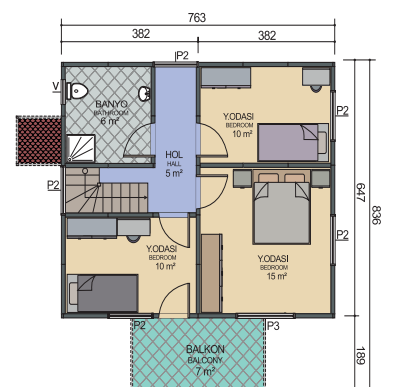
ESP 716



114 m²

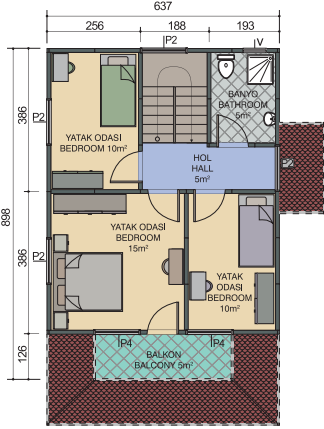


ZEMİN KAT PLANI
GROUND FLOOR PLAN
49 m² + 9 m² = 58 m²

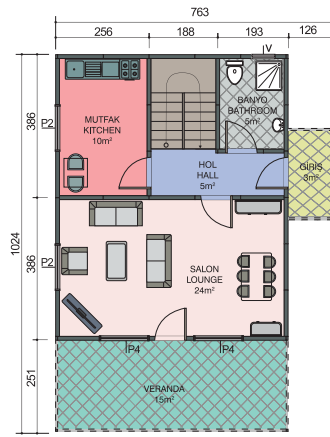


1. KAT PLANI
FIRST FLOOR PLAN
49 m² + 7 m² = 56 m²

ESP 718



1. KAT PLANI
FIRST FLOOR PLAN
49 m² + 5 m² = 54 m²

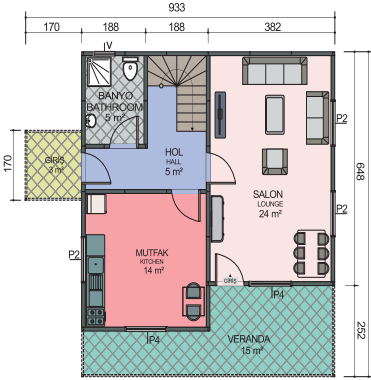


ZEMİN KAT PLANI
GROUND FLOOR PLAN
49 m² + 19 m² = 68 m²

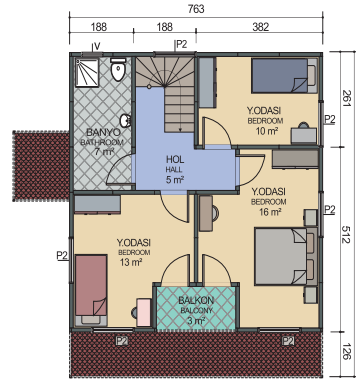


122 m²

ESP 719



ZEMİN KAT PLANI
GROUND FLOOR PLAN
54 m² + 18 m² = 72 m²

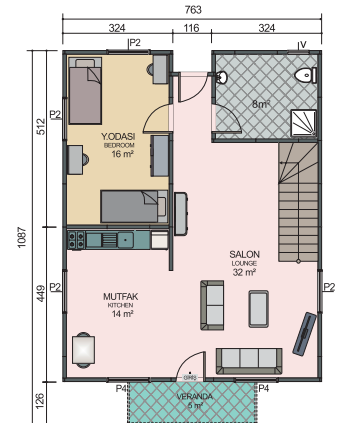


1. KAT PLANI
FIRST FLOOR PLAN
56 m² + 3 m² = 59 m²

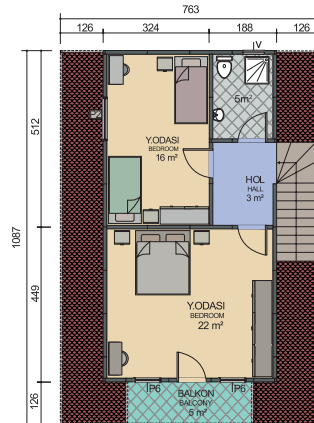


131 m²

ESP 720



ZEMİN KAT PLANI
GROUND FLOOR PLAN
74 m² + 5 m² = 79 m²

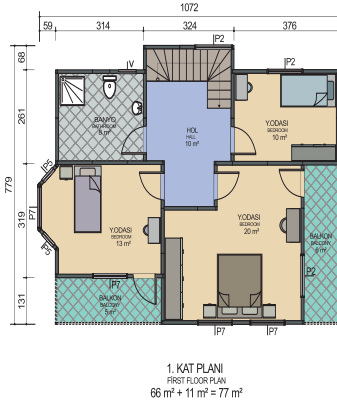
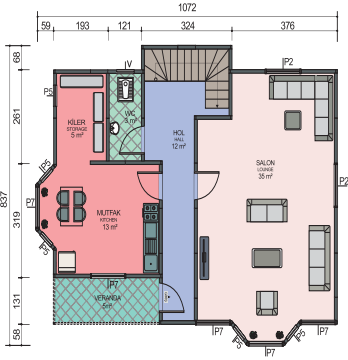


1. KAT PLANI
FIRST FLOOR PLAN
50 m² + 5 m² = 55 m²



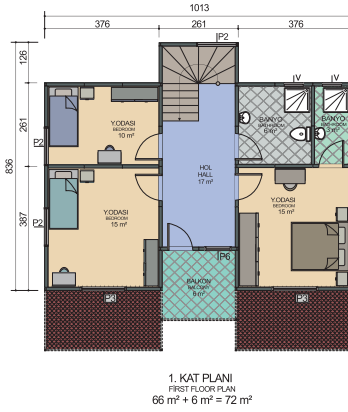
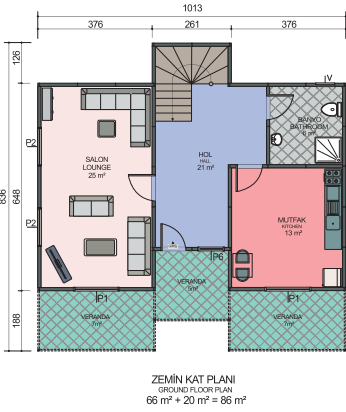
134 m²

ESP 724



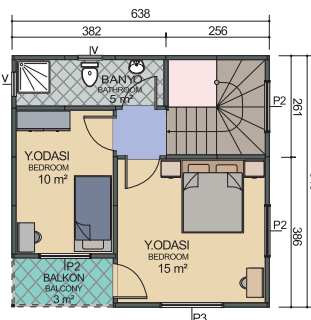
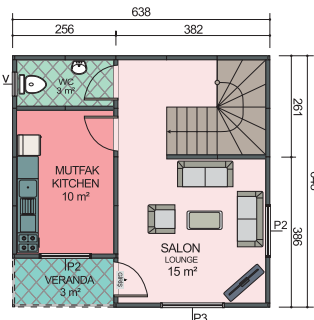
155 m²

ESP 725

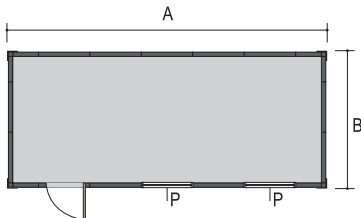


158 m²

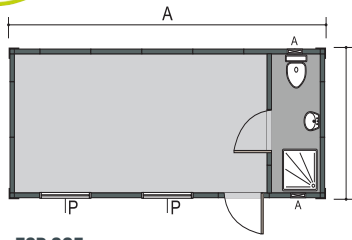
ESP 711



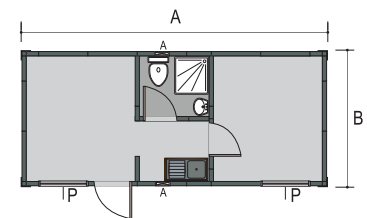
80 m²



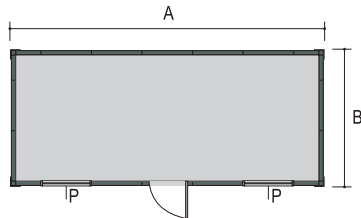
ESP 101



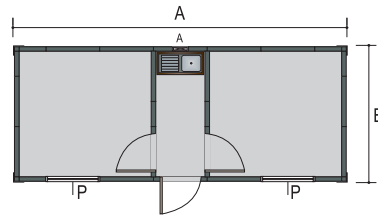
ESP 205



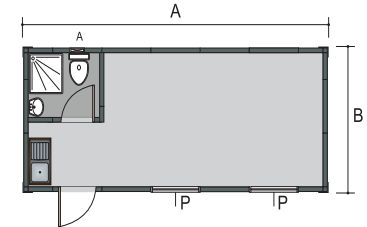
ESP 701



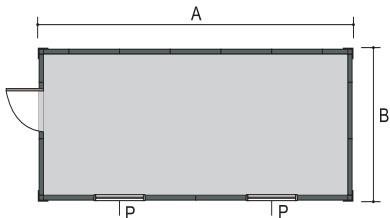
ESP 102



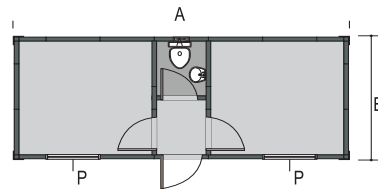
ESP 301



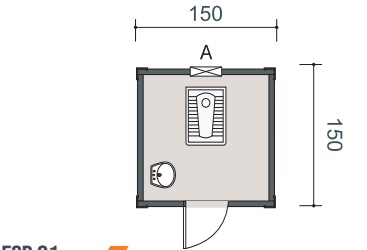
ESP 801



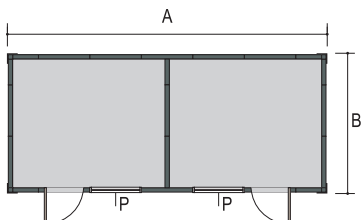
ESP 103



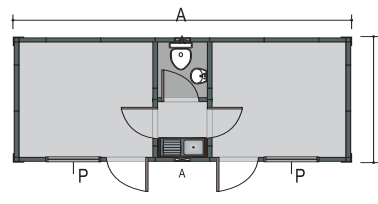
ESP 302



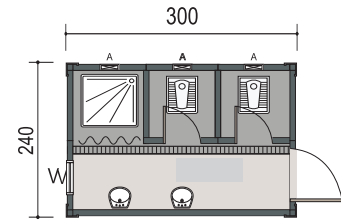
ESP 01



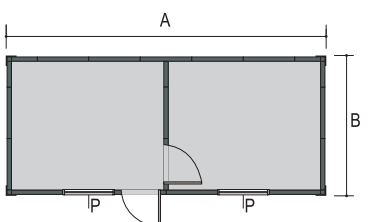
ESP 201



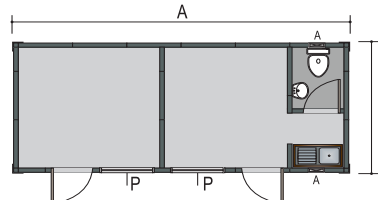
ESP 303



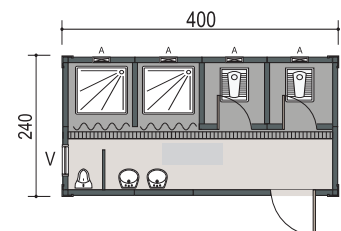
ESP 03



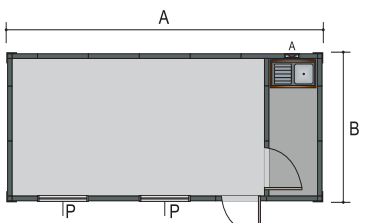
ESP 202



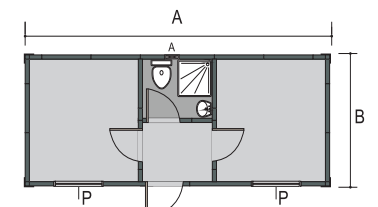
ESP 304



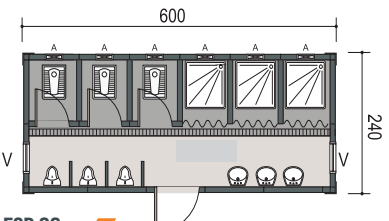
ESP 04



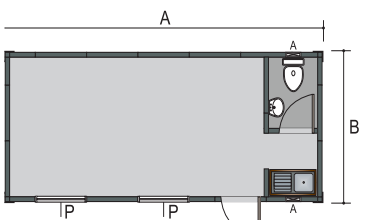
ESP 203



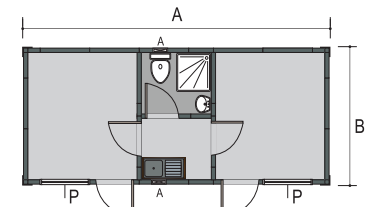
ESP 305



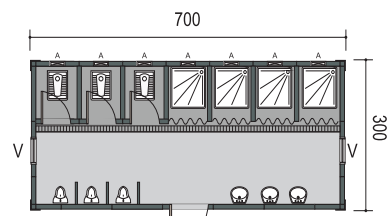
ESP 06



ESP 204



ESP 306



ESP 07

ATİK
HAFİF ÇELİK YAPI SİSTEMLERİ

**Kaliteli,
Ekonomik,
Estetik!**

Prefabricated Houses

**Tek Katlı Prefabrik Evler -
Çift Katlı Prefabrik Evler -
Standart Konteynerler -
Hafif Çelik Yapı Sistemleri -**



MODERN

**PREFABRİK
EVLER**

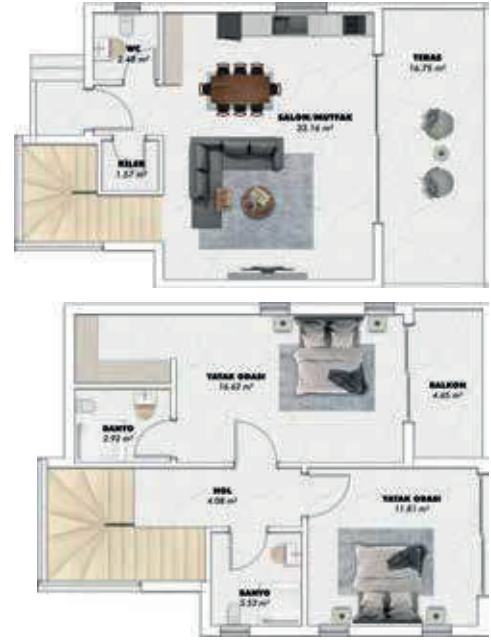
Türkiyenin bir çok yerinde yapılarını ve kalıcı güvenilir yanını sizlere sunmaktayız...





HAFİF ÇELİK YAPI SİSTEMLERİ



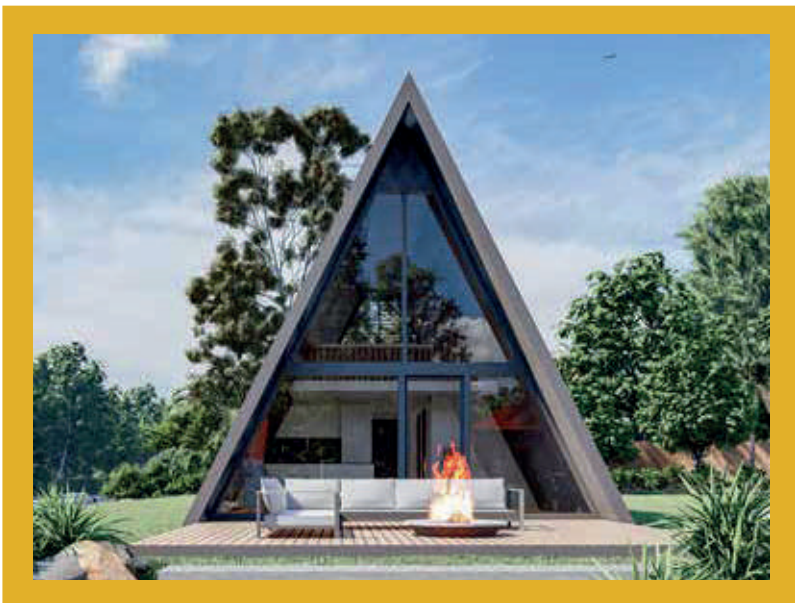


2+1
Brüt / Gross Area **100 m²**



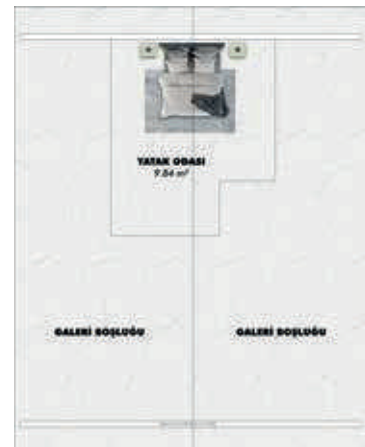
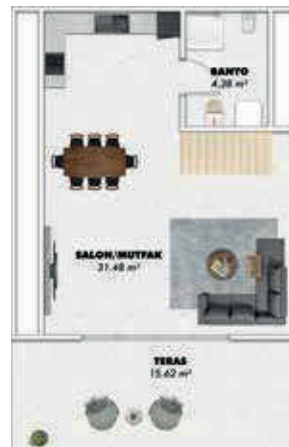
1+1

Brüt / Gross Area **50 m²**



1+1

Brüt / Gross Area **50 m²**

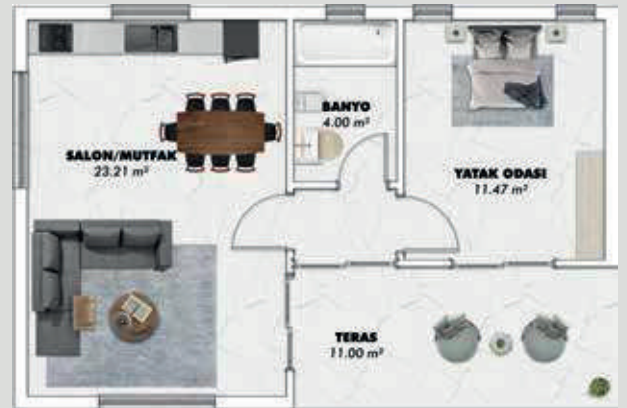




2+1 Brüt / Gross Area **100 m²**



1+1 Brüt / Gross Area **60 m²**



2+1 Brüt / Gross Area **80 m²**



TINY HOUSE

MODEL 2

Length: 8 mt
Width: 2.55 mt
Person: 4



TINY HOUSE

RÖMORKSUZ MODELLER

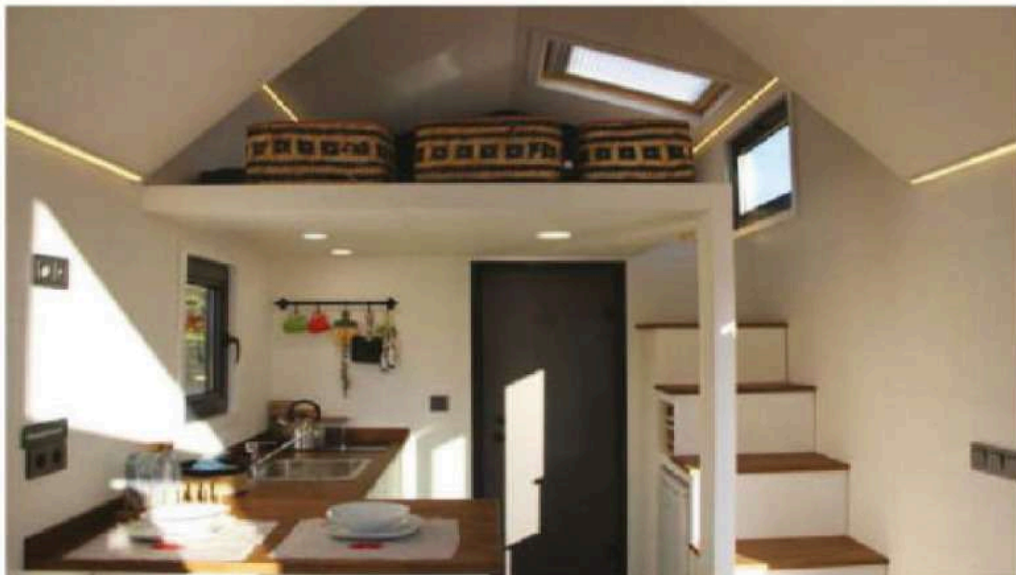
MODELS WITHOUT TRAILER



TINY HOUSE

MODEL 1

Mo.1635 L
Length: 6.35 mt
Width: 2.55 mt
Person: 4



TINY HOUSE



TINY HOUSE

MODELS WITHOUT TRAILER



TINY HOUSE



TINY HOUSE

MODEL 4

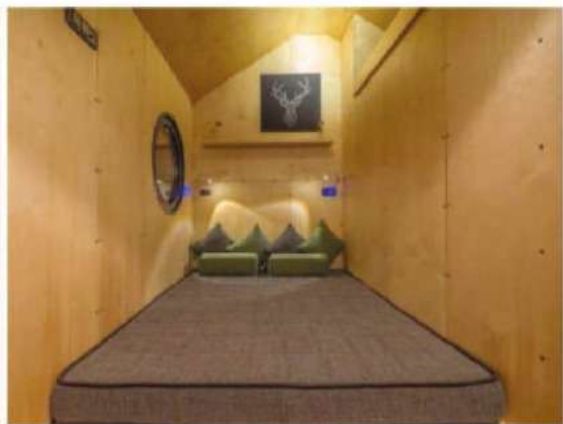
Mo.4 450 L
Length: 4.50 mt
Width: 2.55 mt
Person: 2



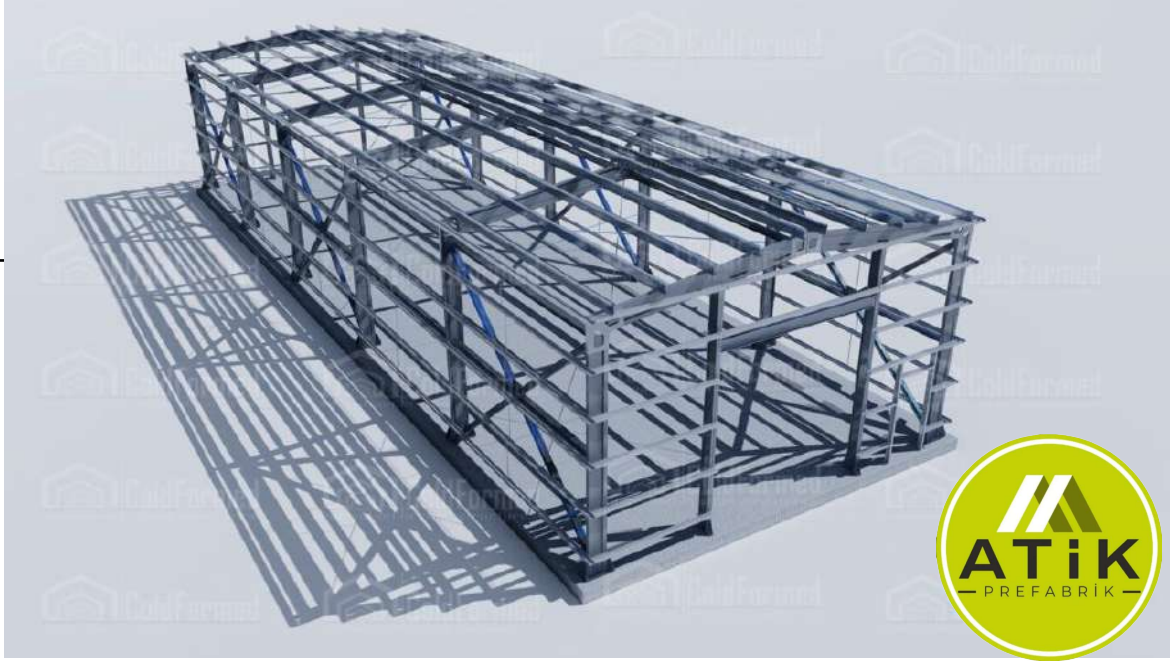
TINY HOUSE



TINY HOUSE



ÇELİK FABRİKA HANGAR DEPO



Referanslarımız

TORUNLAR  GYO

 **CVK**
MADENCİLİK


MATA YAPI ^{25.yıl}

 **MALAKLAR**
İNŞAAT TAHHÜT GIDA MADEN SAN. TİC. A.Ş.

 **YHT**
YÜKSEK HIZLI TREN

 **garanti panel**[®]
"quality & durability"


YÖNYAP
İnşaat malzemeleri İnşaat
taahhüt sanayi Ltd. Şti.

SARAR

LC WAIKIKI

Referanslarımız



HARPUT OTOMOTİV



Referanslarımız



**ANKARA
BÜYÜKŞEHİR
BELEDİYESİ**



**SİVRİHİSAR
BELEDİYESİ**





Çetilik Mahallesi, 14 Nisan Caddesi,

No:32 Arsuz/HATAY



info@atikprefabrik.com



+90 (531) 465 12 02



instagram.com/atikprefabrik

atikprefabrik.com.tr